

YULE VINE

Copyright MMario Leo a Pola de Finale Emilia - 2009
 Free Will offerings may be made through PayPal to mmario@familyoffaire.com

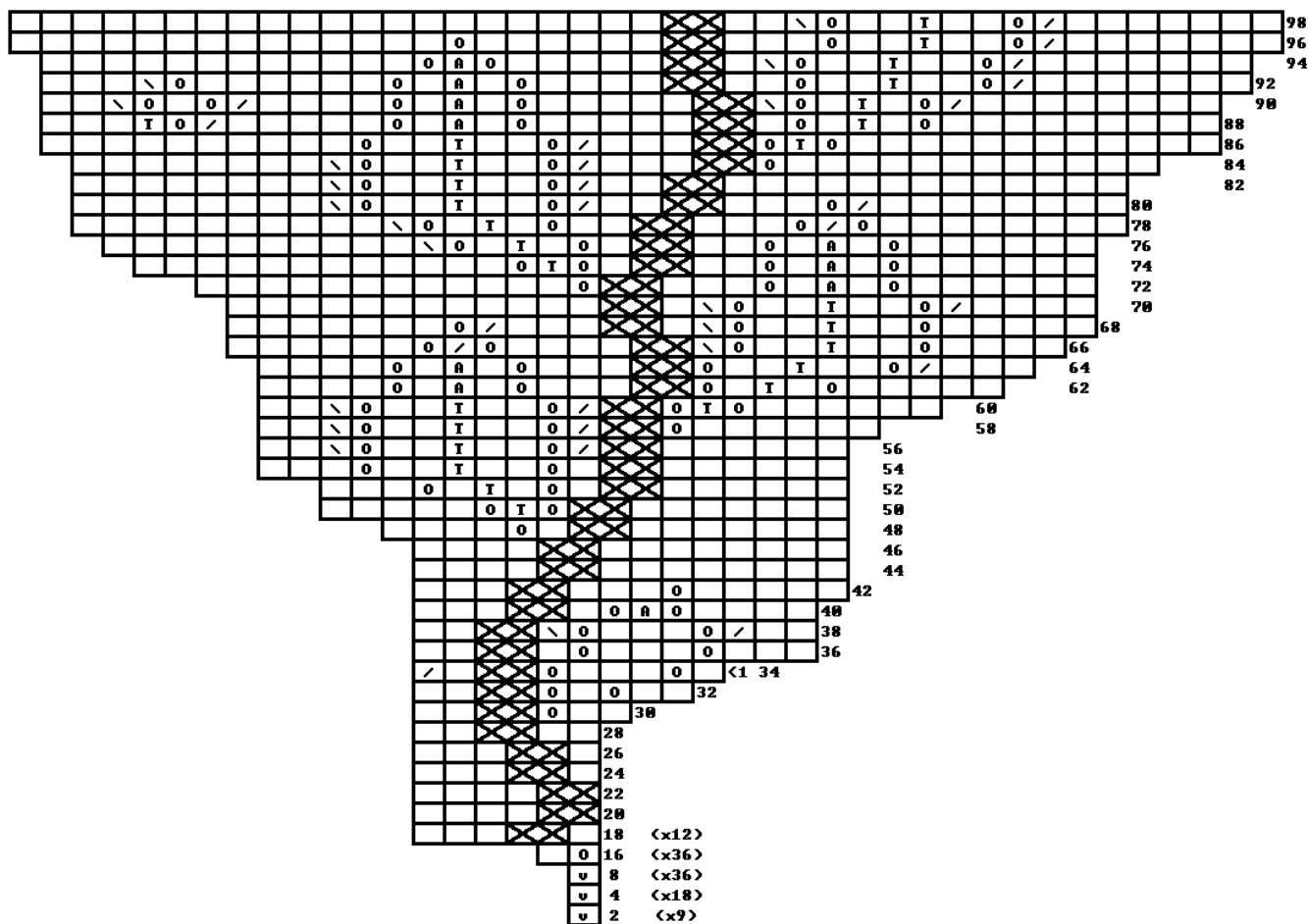
Suggested Needles: 4.25

Suggested Yarn - fingering or lighter

Cast On: 9 stitches - join and knit a round.

Commence Chart with row two. Repeat the chart sufficient to complete round.

Row/rounds not charted are knit plain.



STITCH KEY:

blank = knit

O = yarnover

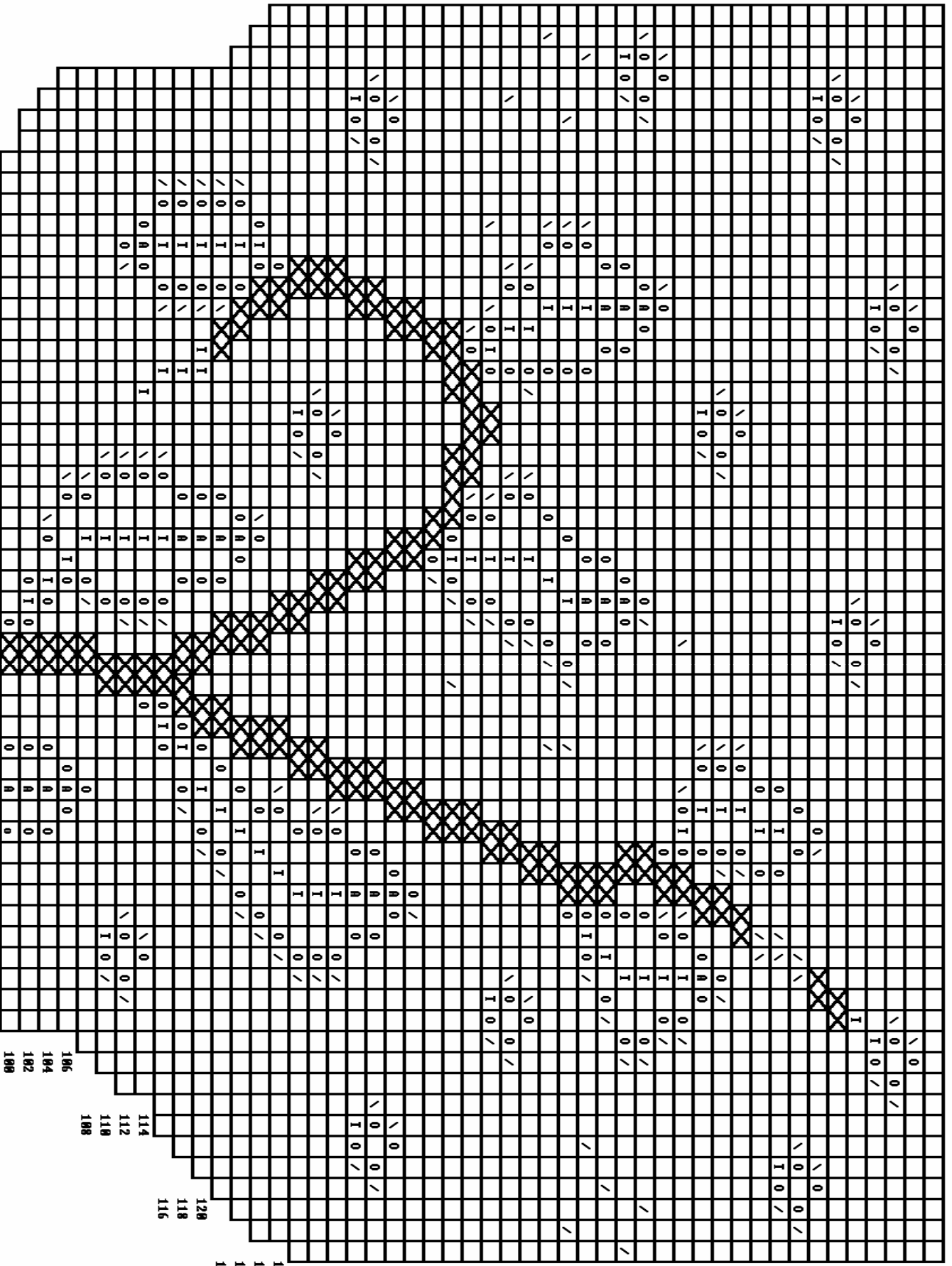
v = knit front and back of single stitch

/ = k2tog

\ = skip

T = knit through back loop

 = twisted pair - knit 2nd stitch, then knit first stitch, then slide both off left needle



196
194
192
190
188
186
184
182
180

114
112
110
108

128
126
124
122

138
136
134
132
130

Row 197 is knit plain.

Finish with little leaf edge:

Simple leaf edge																		
	/		0	/	0				/				0		0			9
	/		0	/	/	0							0		0			7
	/		0		/	/		0					0		0			4
	/		0			/	/		0				0		0			3
2		p	p	p	p	p	p	p	p	p	p	p	p	p	0	^	^	
	/		0			/	/					0		0	/	0		S

All even rows worked as row 2
S= slip 1 stitch. On first repeat work as knit 1
^ = purl two together
p = purl

Using waste yarn, cast 18 stitches onto left needle. Odd rows work out from the body of the shawl; even rows are worked inwards towards the body of the shawl. The final stitch of each even row connects the edge to the body, "binding off" one stitch.

You may find it easier to use a DPN as the "left needle" while working the edge.